

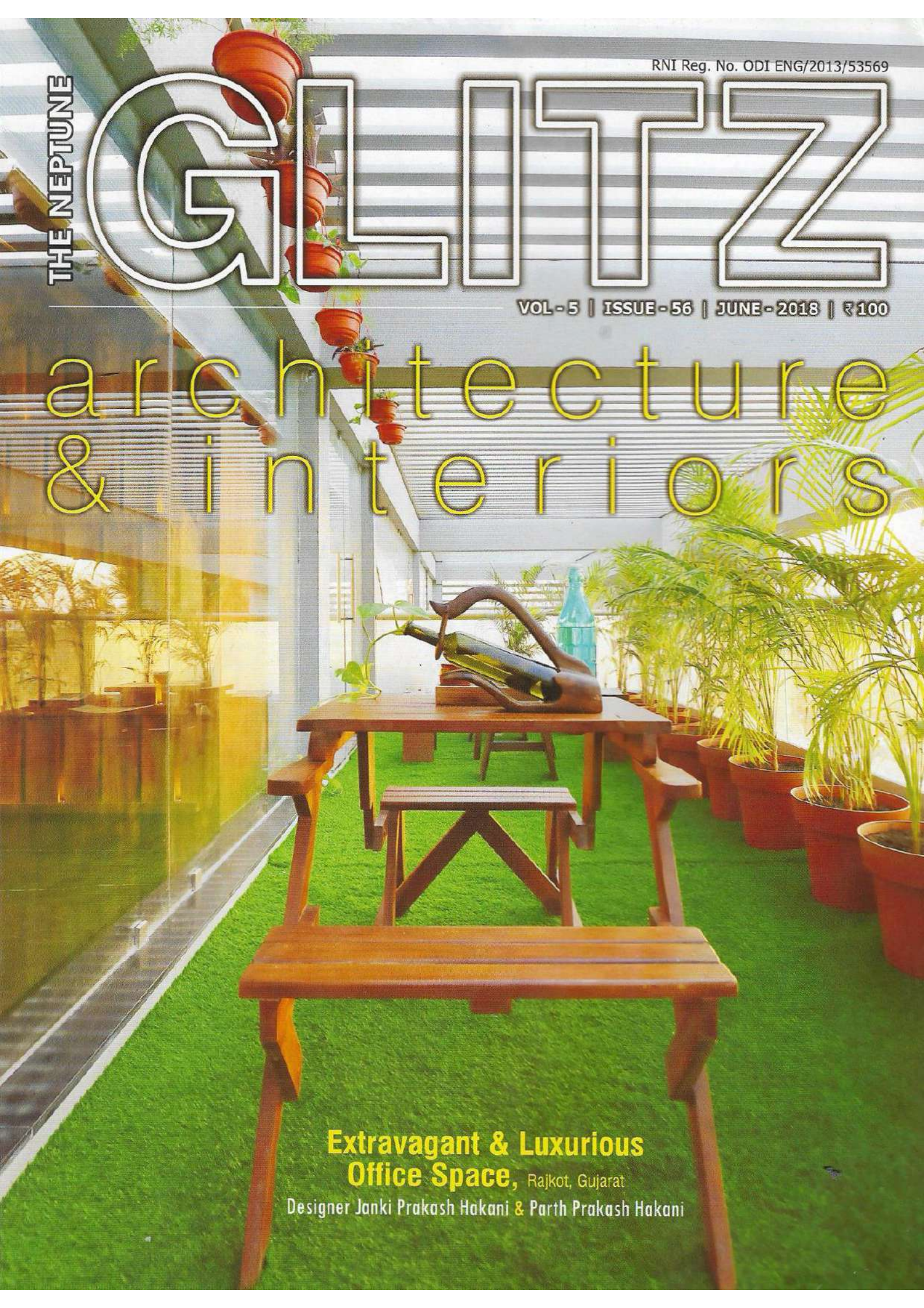
THE NEPTUNE

RNI Reg. No. ODI ENG/2013/53569

G L I T Z

VOL - 5 | ISSUE - 56 | JUNE - 2018 | ₹100

architecture & interiors



**Extravagant & Luxurious
Office Space,** Rajkot, Gujarat

Designer Janki Prakash Hakani & Parth Prakash Hakani





BORGES

Head Office

NEW DELHI

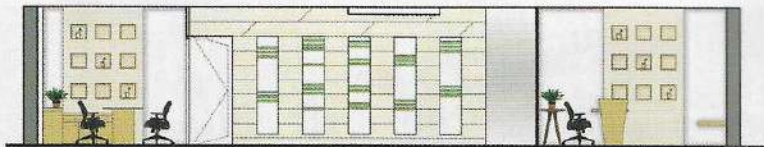
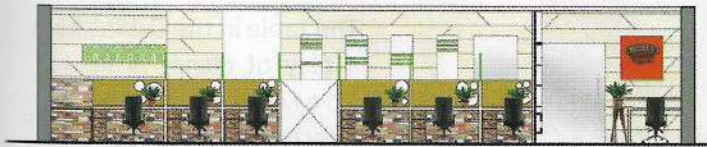
Borges India Private Limited is a huge supplier and trader of vegetable oil, pasta, nuts, creams, and sauces. Borges products are available in more than 100 countries in the five continents since 1896. Just the way, Borges serves the best Mediterranean flavours on our tables, similarly, the design approach to the office renovation has been to serve the best office ambiance keeping the brand identity in mind.

The challenge was to address the irregular floor space and give a sense of uniformity and order to office demands of their Head Office. It houses a Reception, 34 Workstations, 1 Small Meeting Room, 1 Director's Cabin, 3 Additional Cabins, 2 Conferences which can be converted into 1 whenever required, a small space for Marketing Collaterals, Server Room, a Store, a Pantry, a Cafeteria & lots of Storage spaces to accommodate the files, products, etc.



As soon as one enters the office, the warm Reception welcomes the visitor with an interestingly irregularly shaped Reception Table composed with a few trapezoidal surfaces. At its backdrop, the logo of the company has been planned which is bright red in colour. On to the left side of the area, one can see the products displayed on a couple of jumbled boxes at different heights & distances. A few niches to display the awards won by the brand & a few see-through boxes which helps to gaze through the expanse of the office & to the workstations. The choice of materials has been kept simple and elegant & colours have also been kept neutral in beiges & off-white with a pinch of red & green here & there. There is a small meeting area next to the reception area which allows the executives to attend their respective visitors & restricts the visitors to go further inside the office still keeping the visual expanse open to all.

As soon as one enters the area past the reception desk, the arrays of workstations are stacked as per the needs. The workstations for seniors are 5'-0" wide & for juniors are 4'-0" wide. A sense of individuality can be seen at each workstation by using small partition jalis on top of the desks. The Cabins are places as such that it overlooks the workstation areas so as to keep an eye on the workload. The element of uniformity has been achieved by providing white beech laminates on workstations as well as on wall partitions. Pinch of hue has been incorporated by the use of nautical red laminates on workstations and green acrylic jalis on wall partitions. The workstation chairs also play with colours with backs in alternate red & grey. Most of the areas have Italian Diana Flooring except the Conference & Director's Cabin which have Carpet Flooring & Wooden Laminate Flooring respectively.

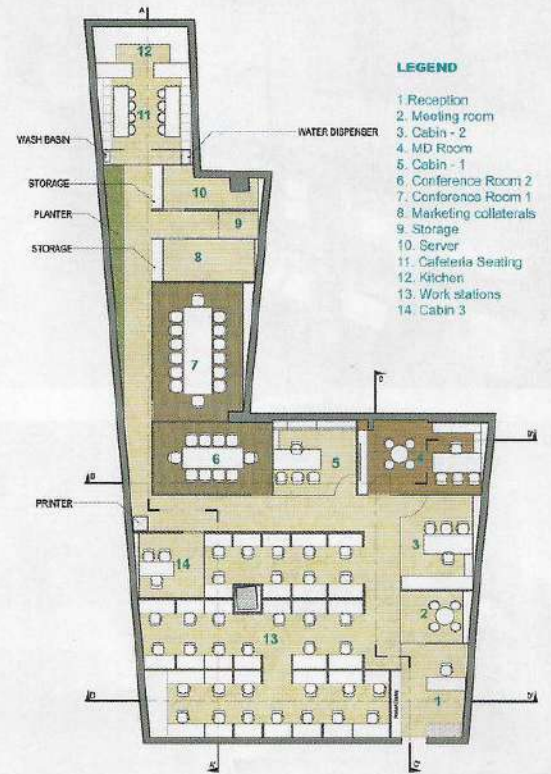


Section of reception area

Section of workstation

Studio AVT firmly believes in the uttermost importance of the space within & beyond rather than the built frame. They endeavor to design and develop an environment for stories to take birth and remain, where true feelings are captured and felt with a sense of belonging, only to resonate through time. "They intend to breathe" is what their motto is.

The studio's core effort to convert a thought into reality has consistently led them for pursuit of excellence. "An-V-Thot" is a hybrid of two words, (anvit) Sanskrit & (thought) English. "anvit" means followed by, so it is actually a studio followed by a thought, and as the name suggests both Ankita & Pratyoosh are always eager to and strive to define their endeavors in a thought evolving and settling manner.





The Table in the Cabins has a play of niches & lights. There has been an effective use of space to create storages to display the products in each Cabin. The Director Cabin also hosts a round table with a couple of seats. It has a provision of LED Screen for small presentations and has several niches next to the Table to host a different variety of products.

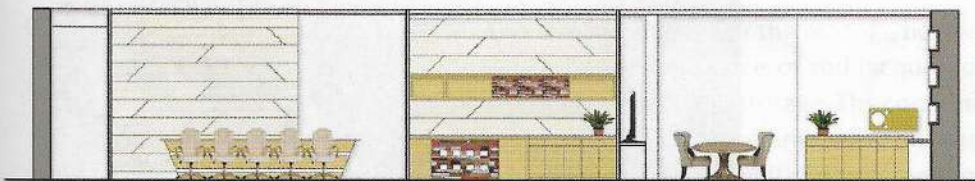


Conference Rooms have been placed in such a manner so as to enhance the movement area & make the passage along with it to look broader. The Dark Carpet flooring adds drama to space & gives a sense of transition from rest of the office area. Both the Conferences overlook the way leading to the cafeteria which has an array of lush green plants over the top of storages. Carefully designed table with its base at angles inclined towards centre maximizes leg space and at the same time layers of indirect running light at the base enhances the



Architect Ankita Sweety

Ar. Ankita Sweety graduated with a distinction in her Architectural Degree from NIT Patna and during the course, also won numerous National and State level Design Contests of repute. Since then she was associated with one of the leading design firms in New Delhi for two years. She is also a Visiting Faculty at an Architecture college in Gurgaon. Apart from that she confidently holds the post of country's editing member for World Architecture Community. ■



environment during presentations. Both the Conference Rooms are being separated by Sliding Doors so that in case of larger gathering both can be utilized making it a single big area.

After graduating in Architectural Technology & Construction Management from Rai University, Ar. Pratyosh Chandan worked with an established firm in Delhi for three years wherein he led various design projects of diverse nature. He then went to UK to further pursue his architectural critique, from University of Brighton, UK. Thereafter he co-created Studio an-v-thot with Ankita to provide design solutions. ■



Architect Pratyosh Chandan



FACT FILE:

- Project** : Borges Head Office
Location : New Delhi
Architect Firm : Studio An-V-Thot Architects Pvt. Ltd.
Principal Architects : Ar. Ankita Sweety & Ar. Pratyosh Chandan
Design Team : Gaurav Chauhan, Vivek Kotha & Tavleen Kaur
Area : 3000 Sq ft.
Completion Date : April 2017
Photo Credits : Avneesh Kumar





The transition space or the passage beside conference rooms lead to the kitchen area which has a confluence of red lacquered glass as a backsplash and beige laminate shutters on overhead storage. The combination of two complementing hues makes it a pleasant sight to adore and enjoy our meals. The furniture has been designed with Table kept a little sleek with complementing bright red fixed leather upholstered seats.

Incorporating green in designs is a crucial point as it is helpful in creating a positive working environment. Lighting plays a vital role in transforming the space and enhancing the interior. The lights have been incorporated not only to the ceiling but also to the main furniture to add a playfulness character & a dash of creativity to the whole space. The overall movement pattern is well defined so as to avoid clashes in the interest of working & also to create a sense of hierarchy in the atmosphere for better work results. ©

Courtesy: Studio An-V-Thot Architects Pvt. Ltd.

e-mail: studio.avt@gmail.com

